

CHICAGO

AN ICONIC BUILDING WITH
BREATHTAKING VIEWS DESIGNED
BY RENOWNED ARCHITECT HARRY
WEESE, SWISSÔTEL CHICAGO
INSPIRES GUESTS WITH ITS SPIRIT OF
VITALITY AND GENUINE WELCOME.

Swissôtel Chicago

323 East Wacker Drive, Chicago, IL 60601-9722, USA
Tel +1 312 565 0565 Fax +1 312 565 0540
chicago@swissotel.com swissotel.com all.accor.com

swissôtel CHICAGO

LOCATION

A VIEW TO REMEMBER

Just steps away from Chicago's greatest attractions, Swissôtel Chicago is an award-winning four-diamond hotel designed by renowned Chicago architect Harry Weese. You will be amazed by the panoramic views of Lake Michigan and Navy Pier, and enjoy being two blocks from exclusive shopping on The Magnificent Mile. Settle into our comfortable beds, armchairs and inviting workspaces, or work with our dedicated meeting specialists to plan your next event. Our in-house dining options make for inspiring meeting spaces, while offering tantalizing cuisine. Looking to stay fit during your travels? The 43rd floor Fitness Centre and Vitality Lounge will take your workout and recovery to new heights.



GUEST ROOMS

SPACIOUS ROOMS WITH IMPRESSIVE VIEWS

Feel relaxed and stay connected. Our 662 contemporary guest rooms and suites are designed with your comfort in mind and feature the latest in-room technologies. The hotel's unique triangular shape means that many of the spacious rooms have large windows and offer panoramic views of the Chicago skyline. For true luxury, reserve the spacious split-level Skyline Duplex Suite or the Presidential Suite featuring elegant artwork, media center, and a grand executive office. If you are looking to energize and rejuvenate, consider The Vitality Suite. The five-room suite is equipped with a Peloton bike, water rowing machine, weights, and a "Wellbeing Wall" with built-in strength-training equipment and a TV loaded with on-demand workouts.

RESTAURANTS & BARS

ENERGIZING AND TANTALISING CUISINE

Well-being is an important aspect of our philosophy, and is reflected in our health-focused Vitality menu. From breakfast, lunch and dinner, to meeting refreshments and snacks, opt for food that tastes great and will fill you with energy for the day ahead. Treat yourself to a night of fine dining in The Palm, a storied American restaurant that specializes in steak, lobster and Italian dishes. For a more relaxed ambiance, enjoy small plates and signature cocktails in Amuse, our lobby bar, then head to the The Palm restaurant each morning to enjoy a classic American breakfast.



FITNESS

TAKING YOUR WORKOUT TO NEW HEIGHTS

Energize your workout with magnificent panoramic views of Lake Michigan from our Penthouse Fitness Centre, located on the 43rd floor. Unwind and replenish after your workout in our signature Vitality Lounge with a complimentary smoothie crafted by our culinary team. You can also explore downtown Chicago by joining one of our 'Vitality' morning runs, or join the Swissôtel Chicago team for a workout with a personal trainer.



MEETINGS, EVENTS & CONFERENCES

INSPIRING & MODERN BUSINESS SPACE

Our prestigious location makes our Event Centre the perfect place to hold executive meetings and high profile events. The Zurich Ballroom is the crown jewel of our eight conference areas and provides an innovative and ideal space for entertaining, dancing and pre-function networking for up to 1,365 people. Élevé, located on the 42nd floor, offers magnificent views of Lake Michigan, making it the go to place for a blue-sky business meeting or a cocktail party. Looking to avoid the inevitable mid-afternoon energy dip? Our educated meeting specialists and in-house chefs will incorporate Vitality elements into your event with activities and menus designed to raise energy levels throughout the day. Whether for an international conference or an exclusive and more intimate meeting, our facilities, service and team are guaranteed to leave a lasting impression.

BUSINESS CENTRE

FOR ALL OF YOUR BUSINESS NEEDS

The on-site full-service business centre provides everything you need to conduct your business remotely and efficiently. Services include high-speed internet, photocopying, faxing, shipping and computer use.



FACILITIES & SERVICES

SWISSÔTEL CHICAGO HIGHLIGHTS

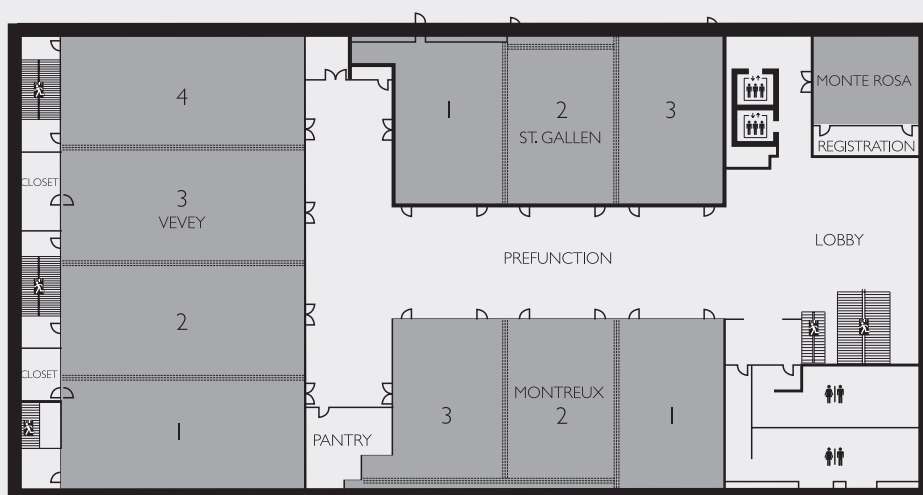
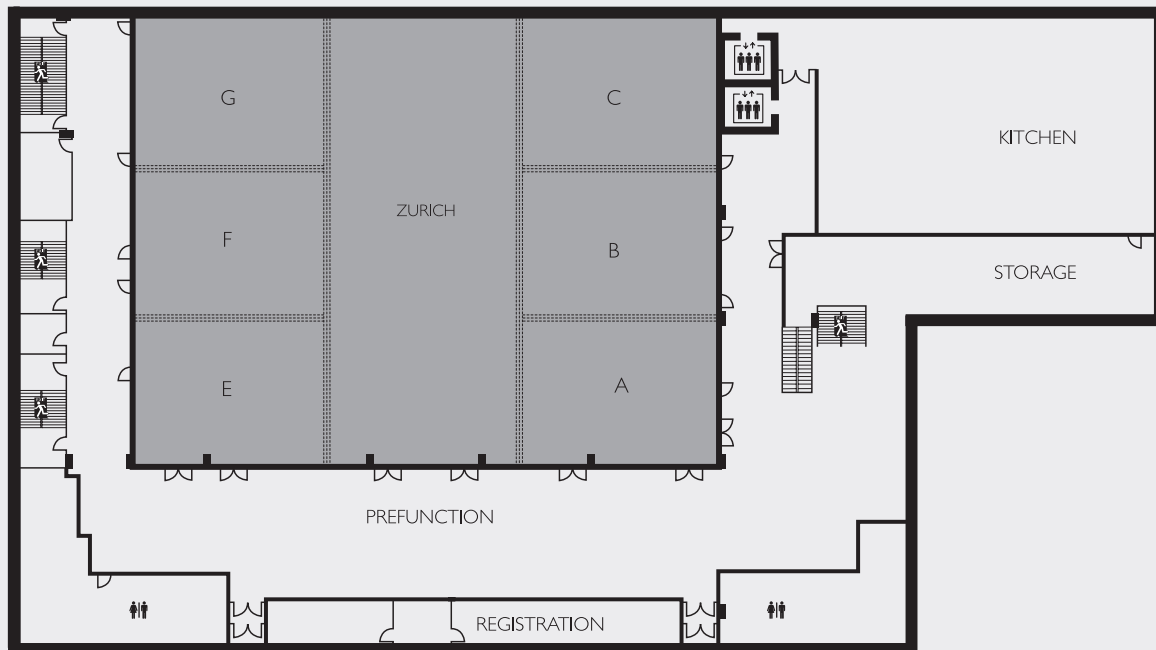
- Centrally-located 4-diamond hotel
- Magnificent views of Lake Michigan, Navy Pier, the Chicago River and downtown Chicago
- 10-minute walk from exclusive shopping on The Magnificent Mile
- 662 beautiful and contemporary guest rooms and suites
- 2 in-house restaurants and bars
- More than 65,000 square feet of professional meeting, conference and space
- Penthouse Fitness Centre
- Wireless internet
- 24-hour in-room dining
- 24-hour valet & self parking options
- Baggage storage
- 24/7 convenience store
- Concierge and multilingual staff
- Child-friendly suite



CAPACITY CHART

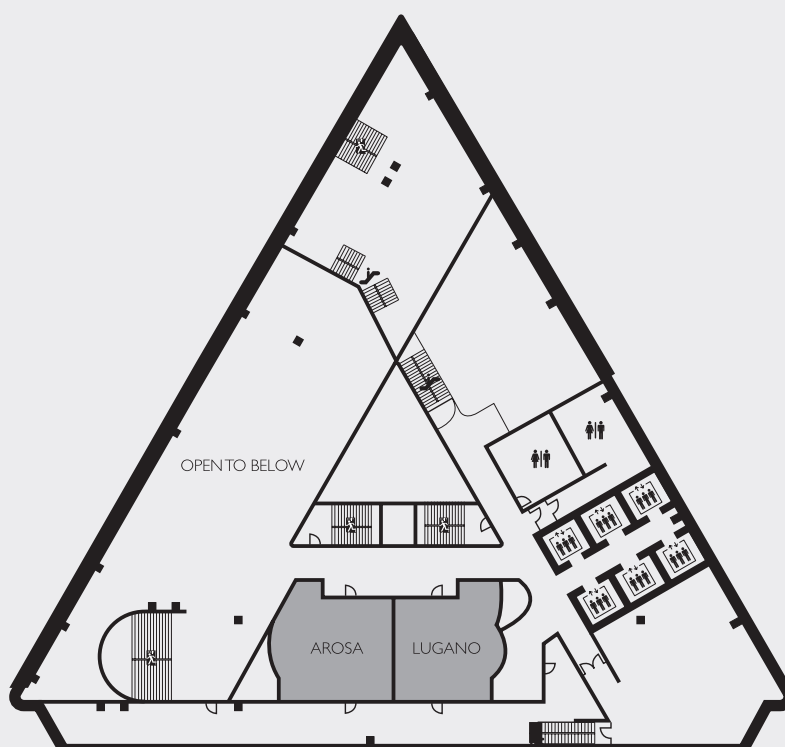
MEETING ROOMS	TOTAL AREA		LENGTH		WIDTH		CEILING HT		BANQUET	THEATRE	CLASS ROOM	CONFERENCE HOLLOW SQ	RECEPTION	U-SHAPE
	F²	M²	F²	M²	F²	M²	F²	M²						
EVENT CENTRE														
Zurich	13,974	1299	137	42	102	31	17	5	1110	1365	872	-	1800	-
Zurich ABC	4590	427	45	14	102	31	17	5	340	420	285	90	450	75
Zurich D	4590	427	45	14	102	31	17	5	340	420	285	90	450	75
Zurich EFG	4590	427	45	14	102	31	17	5	340	420	285	90	450	75
Zurich A	1575	146	45	4	35	11	17	5	100	145	80	30	150	40
Zurich B	1530	142	45	14	34	10	17	5	100	145	80	30	150	40
Zurich C	1575	146	45	14	35	11	17	5	100	145	80	30	150	40
Zurich E	1575	146	45	14	35	11	17	5	100	145	80	30	150	40
Zurich F	1530	142	45	14	34	10	17	5	100	145	80	30	150	40
Zurich G	1575	146	45	14	35	11	17	5	100	145	80	30	150	40
Zurich ABCD	9180	853	90	27	102	31	17	5	660	875	600	120	900	100
Zurich DEFG	9180	853	90	27	102	31	17	5	660	875	600	120	900	100
Zurich AB	3105	289	45	14	69	21	17	5	200	290	160	60	300	60
Zurich BC	3105	289	45	14	69	21	17	5	200	290	160	60	300	60
Zurich EF	3105	289	45	14	69	21	17	5	200	290	160	60	300	60
Zurich FG	3105	289	45	14	69	21	17	5	200	290	160	60	300	60
Vevey	5720	532	104	32	55	17	15	4	440	480	330	120	500	102
Vevey 1	1430	133	26	8	55	17	15	4	110	130	85	40	180	43
Vevey 2	1430	133	26	8	55	17	15	4	110	130	85	40	180	43
Vevey 3	1430	133	26	8	55	17	15	4	110	130	85	40	180	43
Vevey 4	1375	128	25	8	55	17	15	4	110	130	85	40	180	43
Vevey 1 + 2	2860	266	52	16	55	17	15	4	220	260	170	80	350	68
Vevey 2 + 3	2860	266	52	16	55	17	15	4	220	260	170	80	350	68
Vevey 3 + 4	2805	261	51	16	55	17	15	4	220	260	170	80	350	68
Vevey 1, 2, 3	4290	399	78	24	55	17	15	4	330	390	255	100	500	90
Vevey 2, 3, 4	4235	394	77	23	55	17	15	4	330	390	255	100	500	90
St Gallen	2738	254	74	23	37	11	15	4	260	310	180	60	353	60
St Gallen 1	925	86	25	8	37	11	15	4	80	105	51	20	120	35
St Gallen 2	925	86	25	8	37	11	15	4	80	105	51	20	120	35
St Gallen 3	925	86	25	8	37	11	15	4	80	105	51	20	120	35
St Gallen 1 + 2	1850	172	50	15	37	11	15	4	160	210	102	40	235	46
St Gallen 2 + 3	1850	172	50	15	37	11	15	4	160	210	102	40	235	46
Montreux	2664	248	74	23	36	11	15	4	260	310	180	60	360	60
Montreux 1	864	80	24	7	36	11	15	4	80	105	51	20	120	35
Montreux 2	900	84	25	8	36	11	15	4	80	105	51	20	120	35
Montreux 3	900	84	25	8	36	11	15	4	80	105	51	20	120	35
Montreux 1 + 2	1764	164	49	15	36	11	15	4	160	210	102	40	235	46
Montreux 2 + 3	1800	167	50	15	36	11	15	4	160	210	102	40	235	46
Monte Rosa	400	37	20	6	20	6	15	4	30	30	16	16	40	16
Arose	391	36	23	7	17	5	11	4	20	20	12	-	30	15
Lugano	391	36	23	7	17	5	11	4	20	20	12	-	30	15

EVENT CENTRE



LEGEND

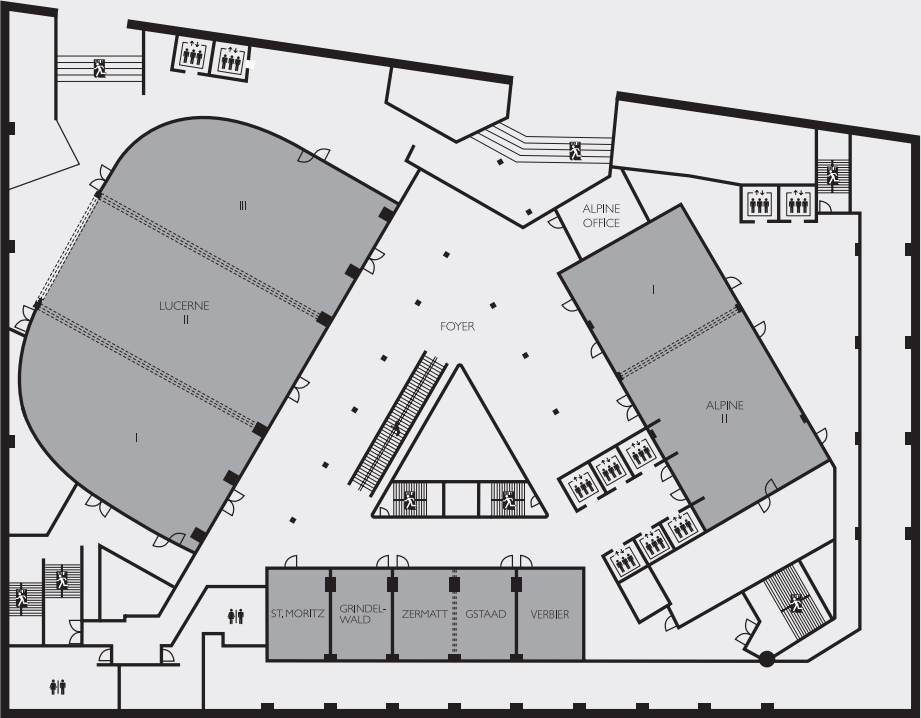
- | | |
|---|--------------------------|
|  | Meeting Room or Ballroom |
|  | Restrooms |
|  | Escalator |
|  | Elevator |
|  | Food & Beverage Outlet |
|  | Emergency Exit |
|  | Stairway |
|  | Window |
|  | Moveable Partition |



CAPACITY CHART

MEETING ROOMS	TOTAL AREA		LENGTH		WIDTH		CEILING HT		BANQUET	THEATRE	CLASS ROOM	CONFERENCE HOLLOW SQ	RECEPTION	U-SHAPE
	F²	M²	F²	M²	F²	M²	F²	M²						
LUCERNE LEVEL														
Lucerne	6016	559	64	20	94	29	13	4	500	500	350	120	500	120
Lucerne I	2048	190	64	20	32	10	13	4	130	160	105	60	200	50
Lucerne II	1920	178	64	20	30	9	13	4	110	140	100	50	180	50
Lucerne III	2048	190	64	20	32	10	13	4	130	160	105	60	200	50
Alpine	2560	238	80	24	32	10	18	6	180	220	145	75	250	70
Alpine I	1024	95	32	10	32	10	18	6	50	80	40	30	80	28
Alpine II	1536	143	48	15	32	10	18	6	110	150	72	50	150	39
St. Mortiz	270	25	18	5	15	5	9	2	20	20	8	12	10	10
Grindelwald	270	25	18	5	15	5	9	2	20	20	8	12	10	10
Zermatt	270	25	18	5	15	5	9	2	20	20	8	12	10	10
Gstaad	270	25	18	5	15	5	9	2	20	20	8	12	10	10
Verbier	270	25	18	5	15	5	9	2	20	20	8	12	10	10
CONCOURSE LEVEL														
Currents	2600	242	65	20	40	12	10	3	80	15	20	20	120	26
Geneva	2688	250	48	15	56	17	9	2	130	100	70	40	220	40

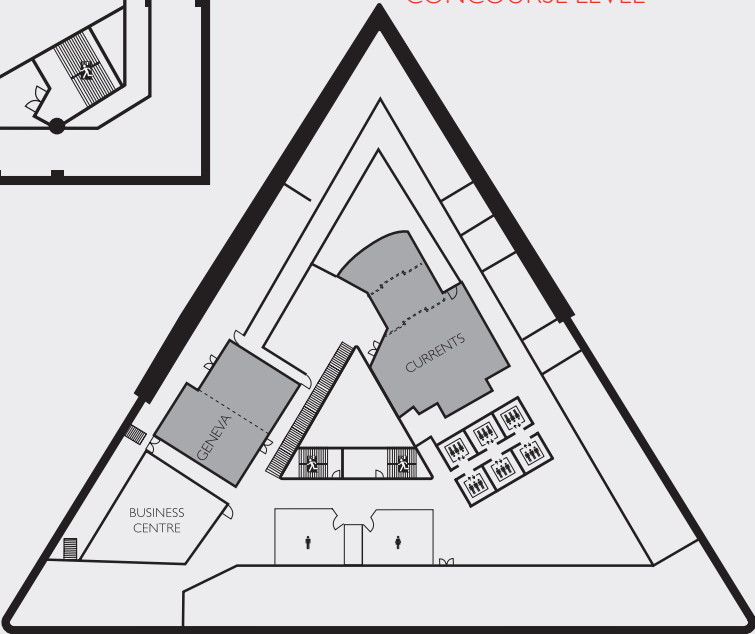
LUCERNE LEVEL



LEGEND

- Meeting Room or Ballroom
- Restrooms
- Escalator
- Elevator
- Food & Beverage Outlet
- Emergency Exit
- Stairway
- Window
- Moveable Partition

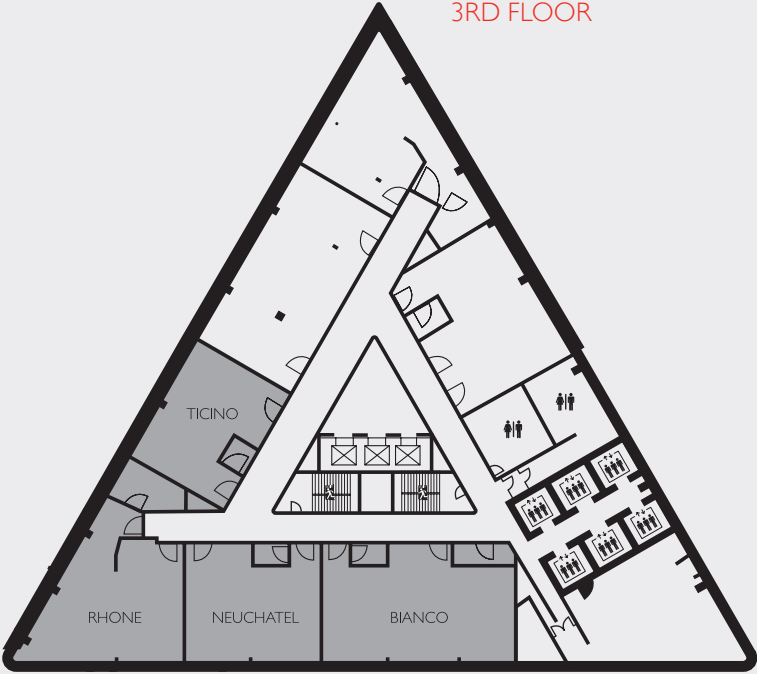
CONCOURSE LEVEL



CAPACITY CHART

MEETING ROOMS	TOTAL AREA		LENGTH		WIDTH		HEIGHT		BANQUET	THEATRE	CLASS ROOM	CONFERENCE HOLLOW SQ	RECEPTION	U-SHAPE
	F²	M²	F²	M²	F²	M²	F²	M²						
3RD FLOOR														
Bianco	810	75	45	14	18	5	9	2	20	25	20	-	70	-
Ticino	510	47	30	9	17	5	9	2	20	15	10	-	70	-
Neuchatel	510	47	30	9	17	5	9	2	20	15	10	-	70	-
Rhone	493	46	29	9	17	5	9	2	20	15	10	-	70	-
42ND FLOOR														
Matterhorn	900	114	35	11	35	11	11	4	50	40	28	16	50	25
Élevé	4960	1474	161	49	33-50	10-15	11	3.35	246	150	108	66	300	57
Élevé Lake View	2917	889	92	28	33-50	10-15	11	3.35	160	150	108	66	180	57
Élevé River View 1	1046	319	33	10	50	15	11	3.35	50	30	18	40	70	40
Élevé River View 2	997	304	30	9	33	10	11	3.35	40	15	12	12	40	15

3RD FLOOR



LEGEND

- Meeting Room or Ballroom
- Restrooms
- Escalator
- Elevator
- Food & Beverage Outlet
- Emergency Exit
- Stairway
- Window
- Moveable Partition

42ND FLOOR

